



Alante



Serial #: 1UJMJABP2R1AS4096
 Model: 29S ALANTE MHA
 VIN#: 1F65F5DN0P0A09477
 Model Year: 2024 Dealer Name: VOGT RV
 5301 AIRPORT FREEWAY
 FT WORTH, TX 76117
 USA

Standard Equipment

Optional Equipment

THE FOLLOWING ITEMS ARE STANDARD ON THIS MODEL AT NO EXTRA CHARGE

OPTIONAL EQUIPMENT INSTALLED ON THIS VEHICLE BY MANUFACTURER

- STANDARD EXTERIOR EQUIPMENT**
- Ford® F53 chassis
 - GVWR- 18,000 lb.
 - GCWR- 23,000 lb.
 - 7.3L V-8 335 HP engine with 468 ft.-lb. torque
 - 6-speed automatic TorqShift® transmission with overdrive and tow haul mode
 - 210-amp alternator
 - Catalytic converter theft deterrent
 - G-rated highway tires-245/70R19.5
 - Front and rear disc, 4-wheel anti-lock brakes
 - 5,000 lb. rear hitch receiver with dual connector and 7-pin plug
 - 12V chassis battery
 - 80 gal. fuel tank
 - 120 in. panoramic windshield
 - StrongholdVBL™ roof, floor and sidewalls
 - Bead-foam insulation (R-24 max roof, R-9 max floor, R-8 max walls)
 - One-piece, seamless, fiberglass front cap
 - Fiberglass exterior walls with vinyl graphics
 - Automatic hydraulic leveling jacks
 - Frameless windows
 - Entrance door with industry's largest travel-view window
 - Electric-powered entrance steps
 - Lockable, pass-through storage compartments with metal slam latches
 - Third brake light
 - 4 in. bumper tube with sewer hose storage
 - Roof ladder
 - Prep for satellite dish
 - Cable TV hookup with RG-6 coax and video selector switch
 - Winegard 2.0 Wi-fi/4G antenna
 - Onan® Marquis Gold Genset 4,000W generator
 - 200W solar panel with dual controller and second house battery
 - (2) 12V house batteries
 - Transfer switch with reverse polarity protection
 - 30-amp electrical service
 - 16.5 gal. propane tank (56 lb.)
 - LP quick-connect hookup
 - Heated holding tanks (12V pads)
 - Exterior utility center
 - Winterization drain system
 - Black tank flush
 - Outside shower
 - 12V demand water pump
 - Water filtration system

- STANDARD INTERIOR EQUIPMENT**
- Swivel driver and passenger seats
 - 6-way power driver seat
 - Soft-touch, vinyl-wrapped automotive dash
 - Tilt steering wheel
 - Cruise control
 - Hill start assist
 - Electronic stability control
 - Traction control
 - Auxiliary start
 - Power front privacy shade with manual side privacy shades
 - 84 in. interior ceiling height
 - High-intensity recessed LED ceiling lights
 - LED-lit hardwood fascia
 - Hardwood cabinet doors and drawer fronts
 - Ball-bearing drawer guides
 - Jayco-exclusive, easy-operation legless dinette table
 - 2-point lap safety belts in all designated seating locations
 - Car seat tethers (select floorplans)
 - Dual A/C units with power management system
 - 30,000 BTU auto-ignition ducted furnace
 - 6 gal. gas/electric DSI auto-ignition water heater
 - 10 cu. ft. 12V refrigerator
 - Furrion® all-in-one cooktop and oven
 - Residential-size microwave
 - Large stainless steel kitchen sink with cover
 - LED-lit pressed countertops
 - Flip-up countertop extension (select models)
 - Decorative kitchen backsplash
 - Pop-up charging station in kitchen with 120V outlets and USB ports
 - Shower with decorative surround, glass door, skylight and light
 - Stainless steel bathroom sink
 - Porcelain toilet with foot flush
 - Powered roof vent in bathroom with wall switch
 - Walk-around, queen-size bed with bedspread and nightstands (king size in 27A)
 - USB port and wireless charging in nightstands
 - Under-bed storage (select models)
 - Large wardrobes
 - Bunks with industry-exclusive 300 lb. capacity each (29F)
 - Wall-mounted tablet holder in each bunk (29F)
 - Smoke alarm
 - Carbon monoxide detector
 - Fire extinguisher

Base price	175,718.00
MODERN FARMHOUSE	443.00
USA STANDARDS	n/c
CUSTOMER VALUE PACKAGE	9,923.00
BEDROOM TV	383.00
STANDARD HOUSE BATTERY	n/c
THEATER SEATING SOFA	525.00
FRONT OVERHEAD BUNK	2,993.00

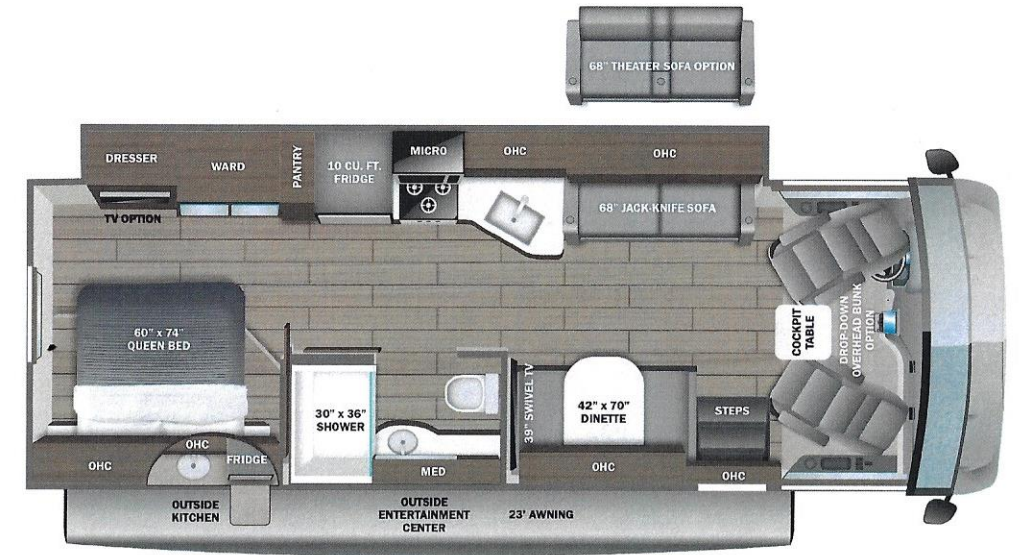
FRT \$1,295.00

MSRP \$191,280.00

DEALER INSTALLED OPTIONS

Manufacturer's Suggested Retail Price

TOTAL AMOUNT DOES NOT INCLUDE STATE AND LOCAL TAXES OR LICENSE FEES. THE PRICE SHOWN ABOVE MAY OR MAY NOT BE REPRESENTATIVE OF THE ACTUAL SELLING PRICE OF SIMILAR RECREATIONAL VEHICLES IN YOUR AREA.



DIMENSIONS

Exterior height:.....149.00"
 Exterior width:.....101.00"

CAPACITIES

Fresh water tank (gals.):...72.00
 Gray water tank (gals.):...49.00
 Black water/toilet tank (gals.):.....50.00
 Propane (lbs.):.....56
 Propane (gals.):.....13
 Water heater (gals.):.....0.00

TIRES

Tire size (front):.....245/70R19.5G
 Tire size (mid):.....
 Tire size (rear):.....245/70R19.5G

Some dimensions may be rounded and may vary from the actual dimensions
 Weights may be estimated calculations and may vary from the actual weight - refer to the vehicle weight labels for actual weights
 Floorplans, features and specifications are subject to change without notice.

